

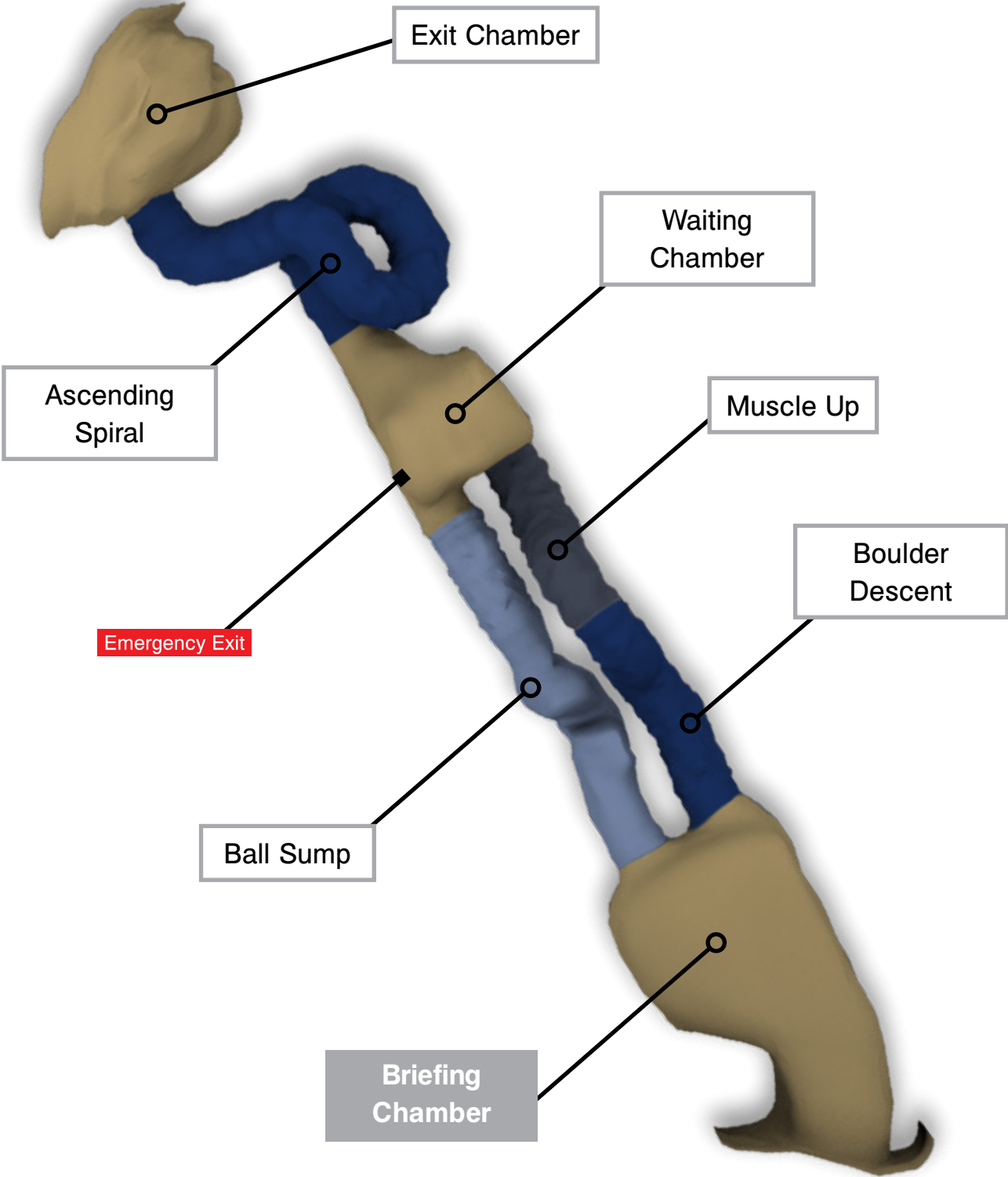
WALLTOPIA

ARTIFICIAL CAVES

SAMPLE PROJECTS

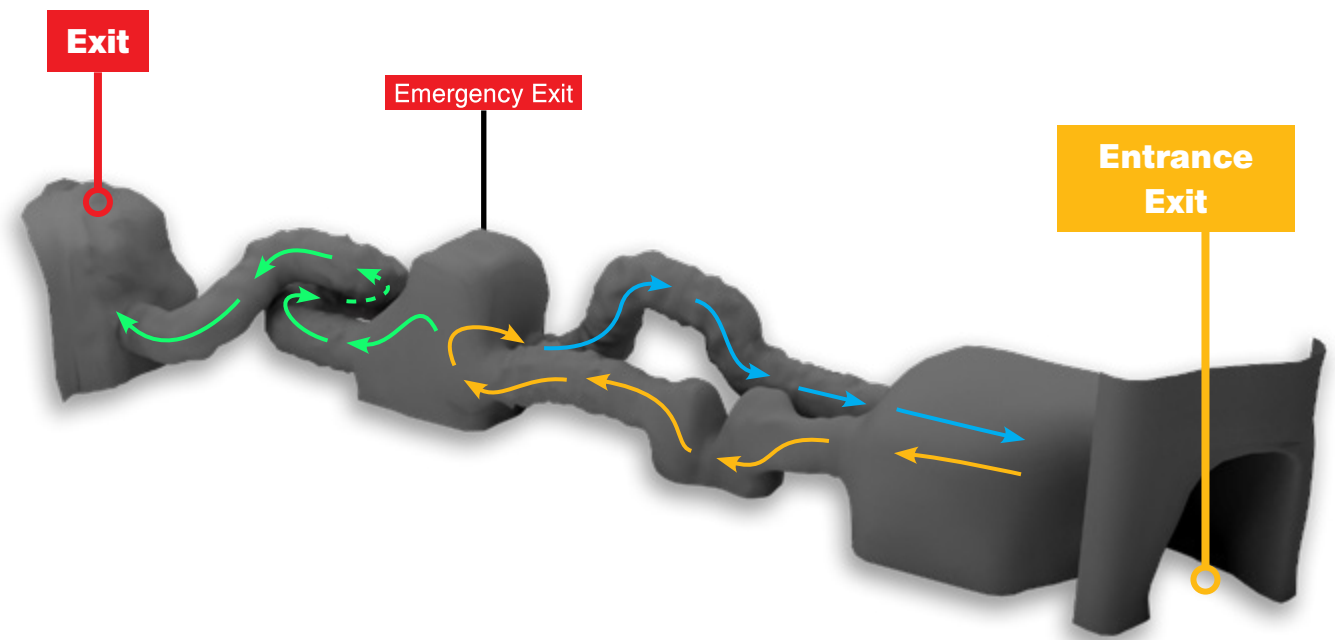


SAMPLE PROJECT 1



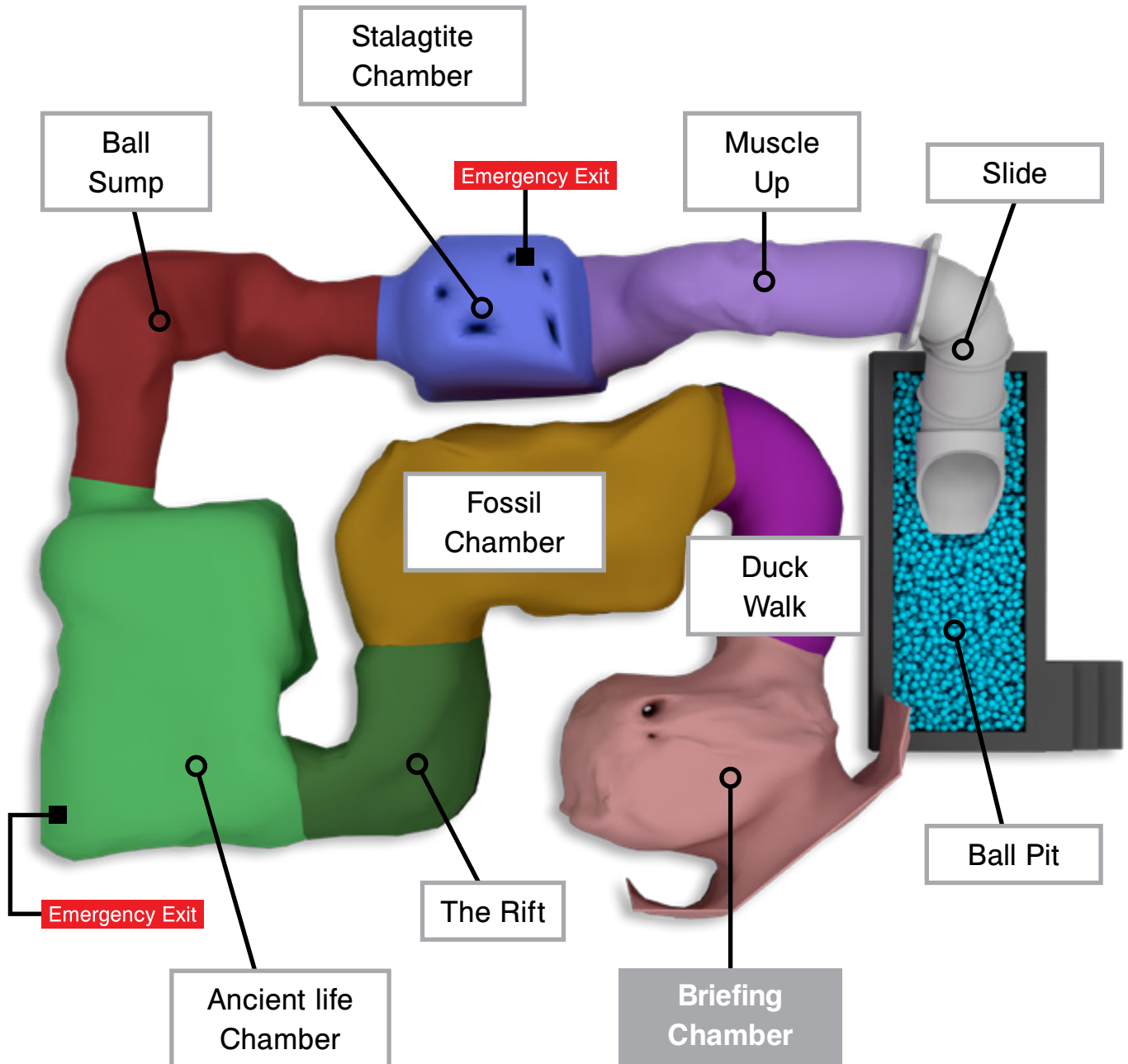
Components

- Ventilation system
- LED lighting
- CCTV
- Sound system
- Emergency exits
- Gear (helmets, knee pads, torches)
- Ball sump
- Rubber floor



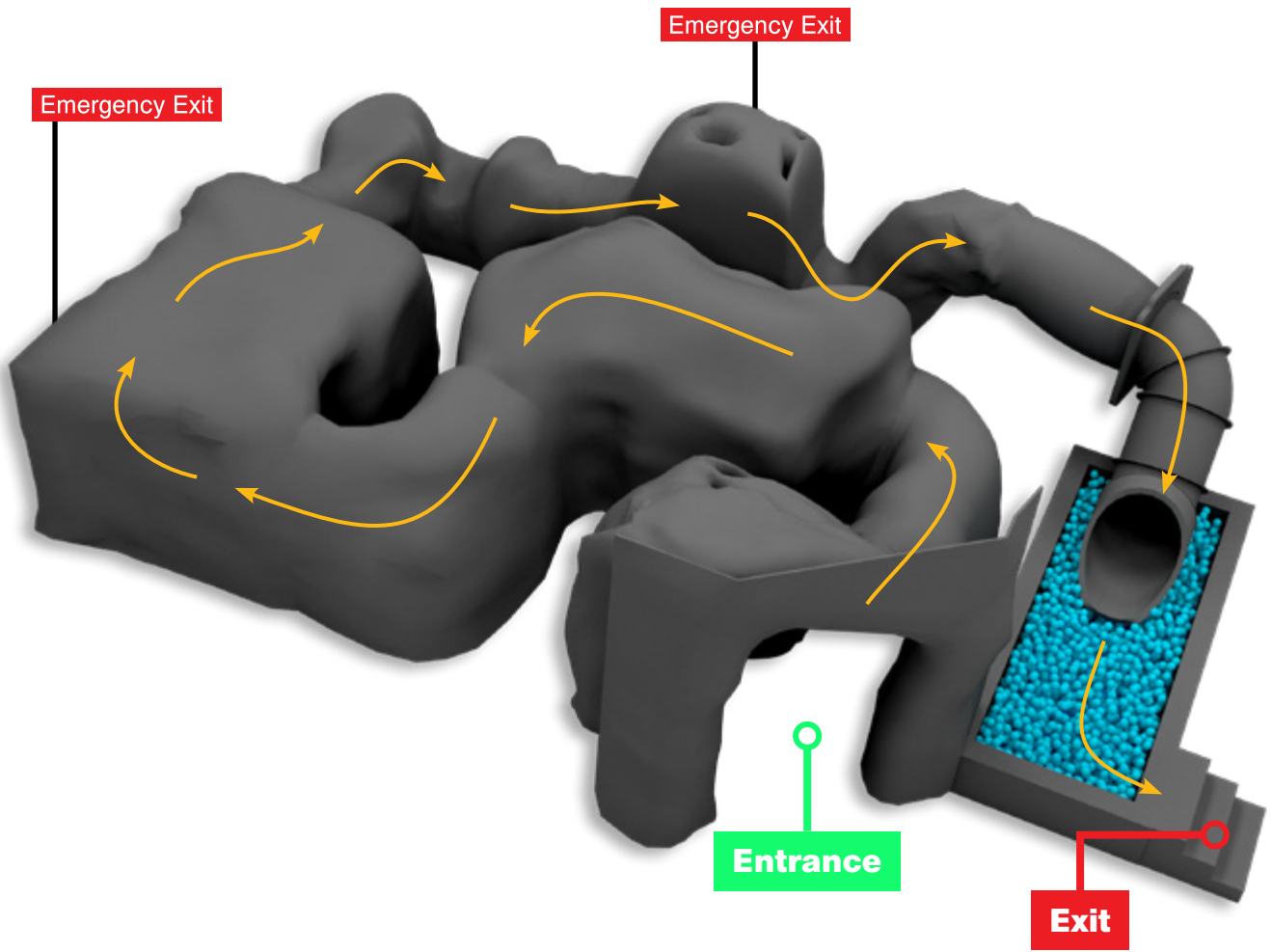
Momentum Capacity	14 people	
Footprint	45 m ²	484.3 ft ²
Height	3,5 m	11.4 ft
Operational Length	27 m	88.5 ft
Routes	2	
Min. Operators Required	1	
GRP	200 m ²	2,152.7 ft ²

SAMPLE PROJECT 2



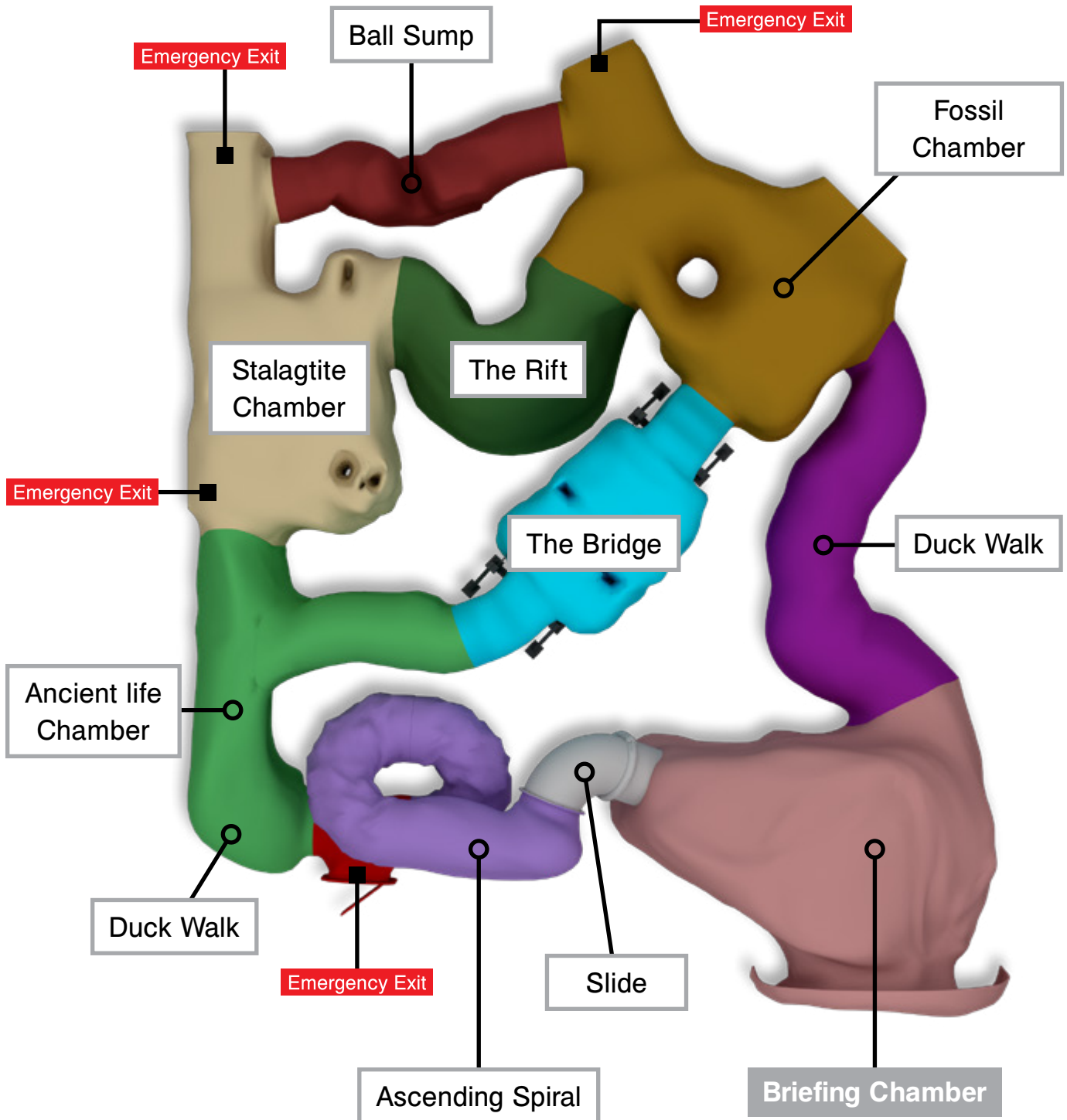
Components

- Ventilation system
- LED lighting
- CCTV
- Sound system
- Emergency exits
- Gear (helmets, knee pads, torches)
- Ball sump
- Rubber floor



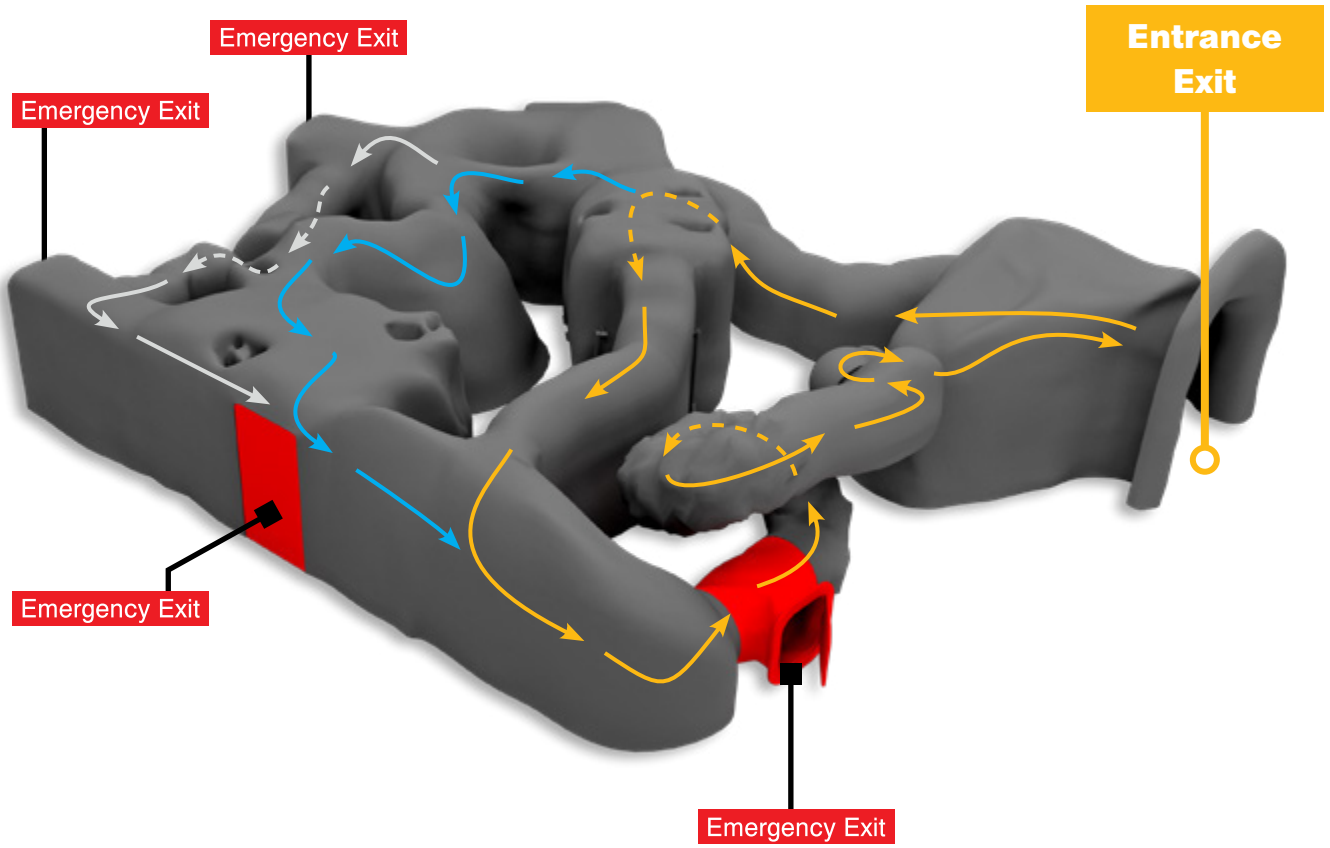
Momentum Capacity	14 people	
Footprint	112 m ²	1,205.5 ft ²
Height	3 m	9.8 ft
Operational Length	30 m	98.4 ft
Route	1	
Min. Operators Required	1	
GRP	200 m ²	2,152.7 ft ²

SAMPLE PROJECT 3



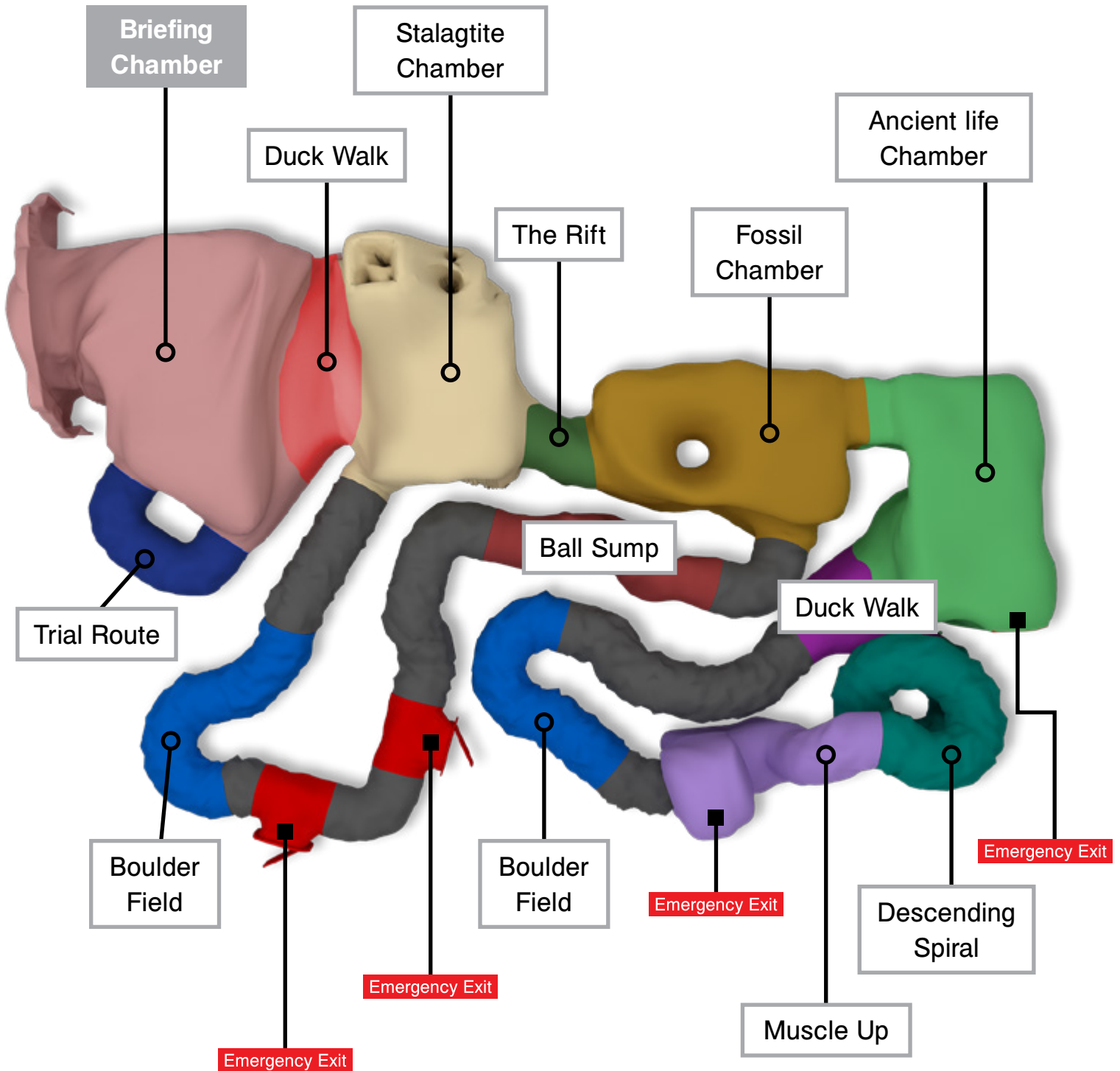
Components

- Ventilation system
- LED lighting
- CCTV
- Sound system
- Emergency exits
- Gear (helmets, knee pads, torches)
- Ball sump
- Rubber floor
- Bridge



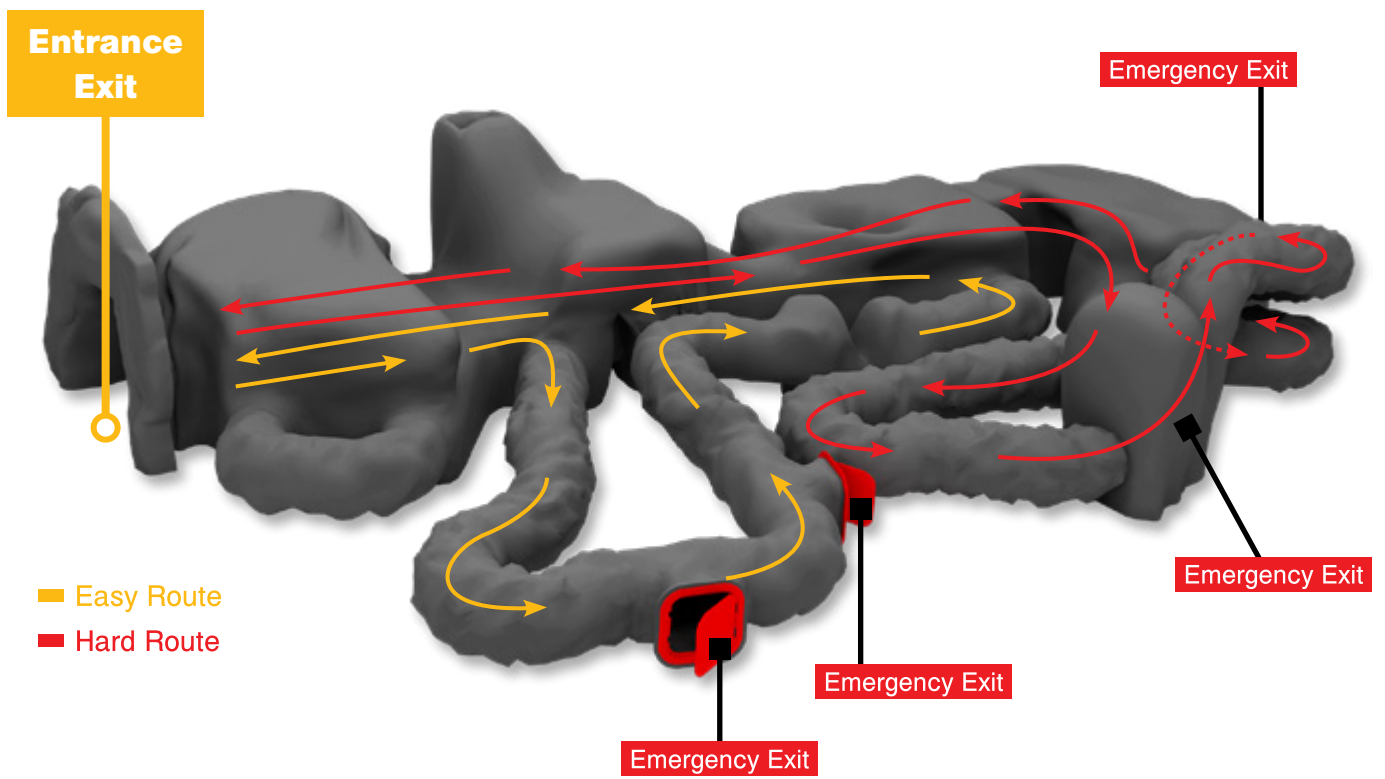
Momentum Capacity	21 people	
Footprint	136 m ²	1,463.8 ft ²
Height	3,5 m	11.4 ft
Operational Length	57 m	187 ft
Routes	2	
Min. Operators Required	2	
GRP	337m ²	3,627.4 ft ²

SAMPLE PROJECT 4



Components

- Ventilation system
- LED lighting
- CCTV
- Sound system
- Emergency exits
- Gear (helmets, knee pads, torches)
- Ball sump
- Rubber floor

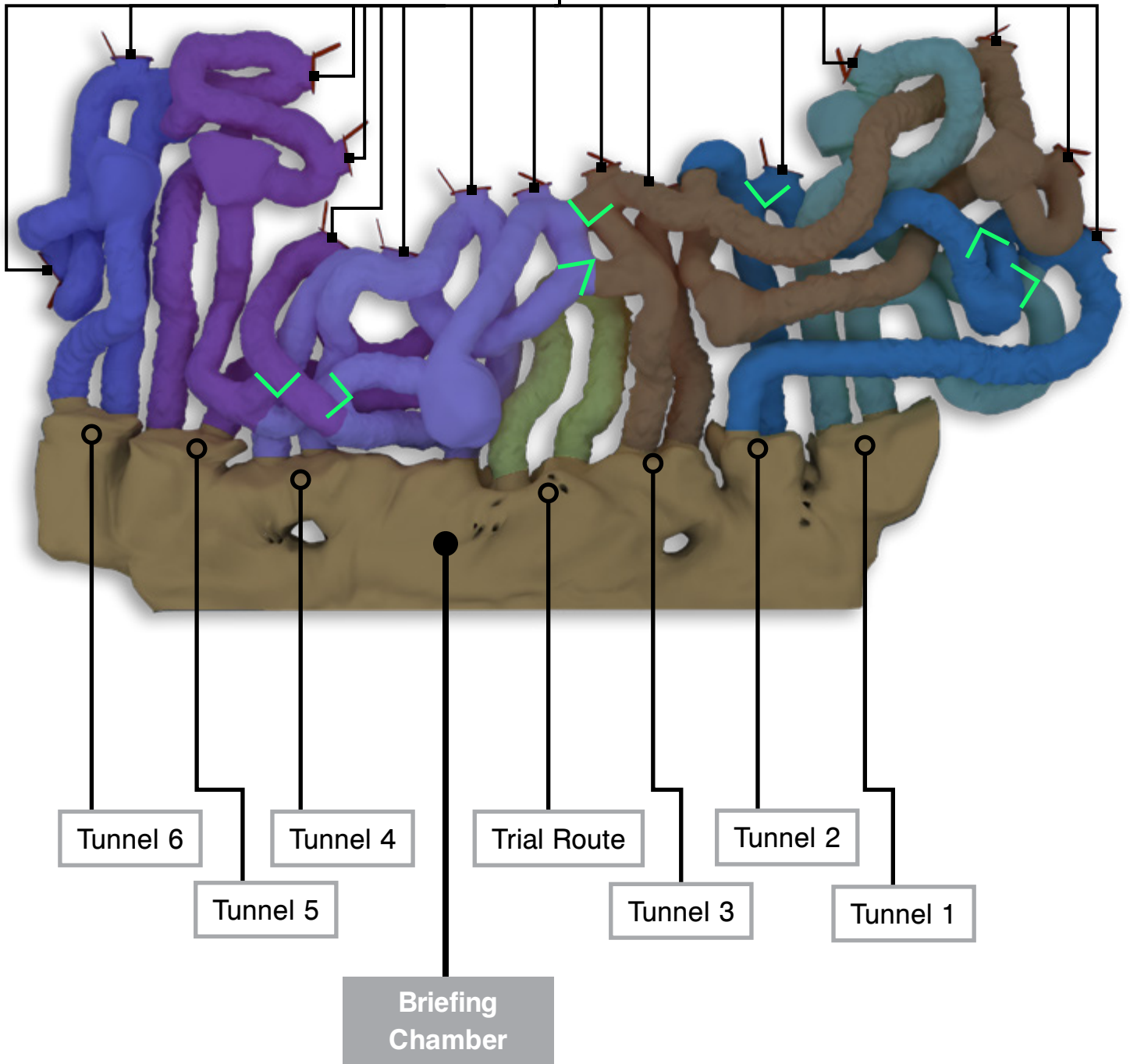


Momentum Capacity	35 people	
Footprint	165 m ²	1,776 ft ²
Height	3,5 m	11.4 ft
Operational Length	86 m	282.1 ft
Routes	2	
Min. Operators Required	2	
GRP	440 m ²	4,736.1 ft ²

SAMPLE PROJECT 5

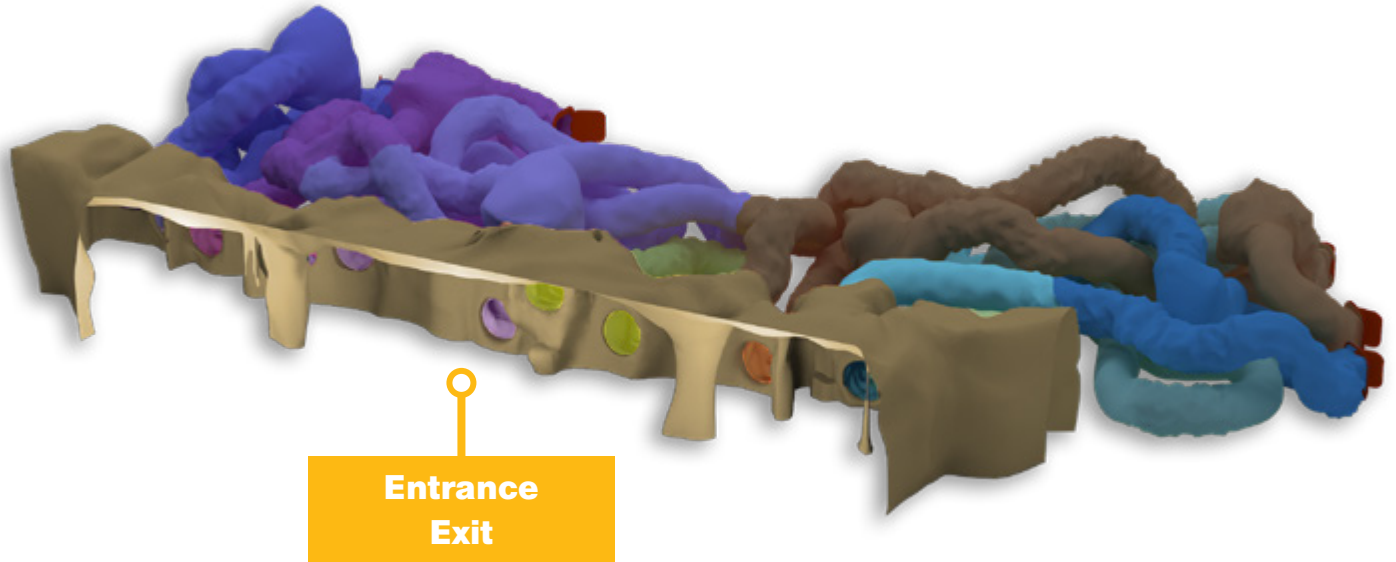
Rotating Rock ◀

Emergency Exit



Components

- Ventilation system
- LED lighting
- CCTV
- Sound system
- Emergency exits
- Gear (helmets, knee pads, torches)
- Ball sump
- Rubber floor
- 10 rotating rocks
- Obstacles in tunnels



Momentum Capacity	105 people	
Footprint	367 m ²	3,950.3 ft ²
Height	4 m	13.1 ft
Operational Length	227 m	744.7 ft
Routes	26	
Min. Operators Required	8	
GRP	1097 m ²	11,808 ft ²