

NINJA COURSE

by **WALLTOPIA**



THE CONCEPT

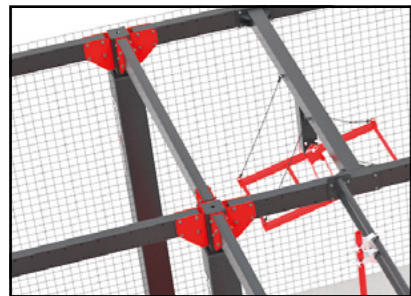
A fun physical challenge for ninjas of all ages

Ninja Course provides a great workout for the whole body—challenging strength, endurance, agility and balance in a completely safe environment.

Each Ninja Course has a modular construction—sections & obstacles can be easily added, removed, rearranged and modified to accommodate various footprints.

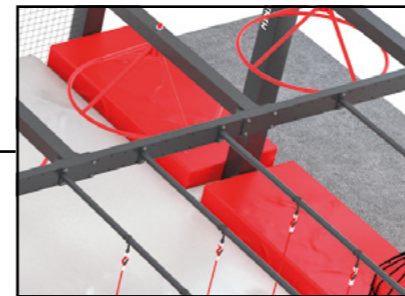


THE STRUCTURE



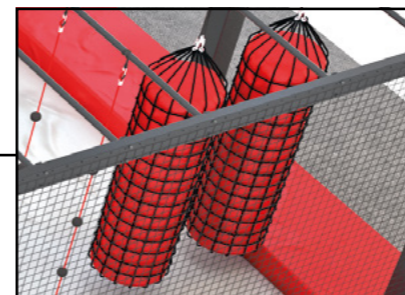
Modular structure

Walltopia offers two types of Ninja Course structure - a version made from aluminum trusses and a steel version. Both are modular, easy to upgrade and allow for expansion in any direction. The typical Ninja Course has 3 lanes with 3 obstacles each but different setups are also available.



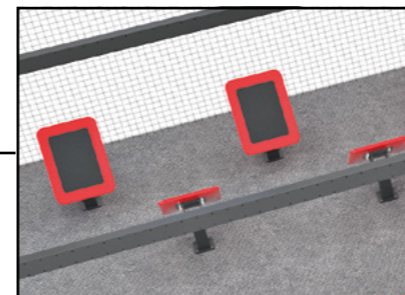
Foam-padded platforms

Ninja Course is equipped with foam-padded platforms between each section. They help minimize the risk of injury in case of falls.



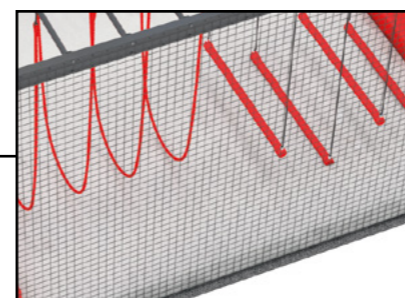
Hanging obstacles

Ninja Course proposes a large variety of hanging obstacles—over 40 are available to choose from. They offer varying levels of difficulty, so to provide a challenge to people of all athletic capabilities. Obstacles can easily be moved or altogether replaced to refresh the experience and sustain visitors' interest.



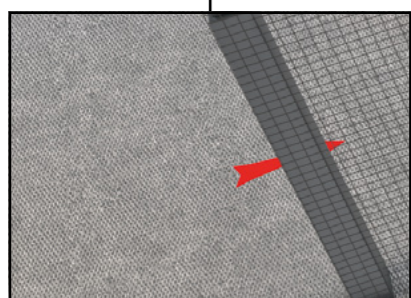
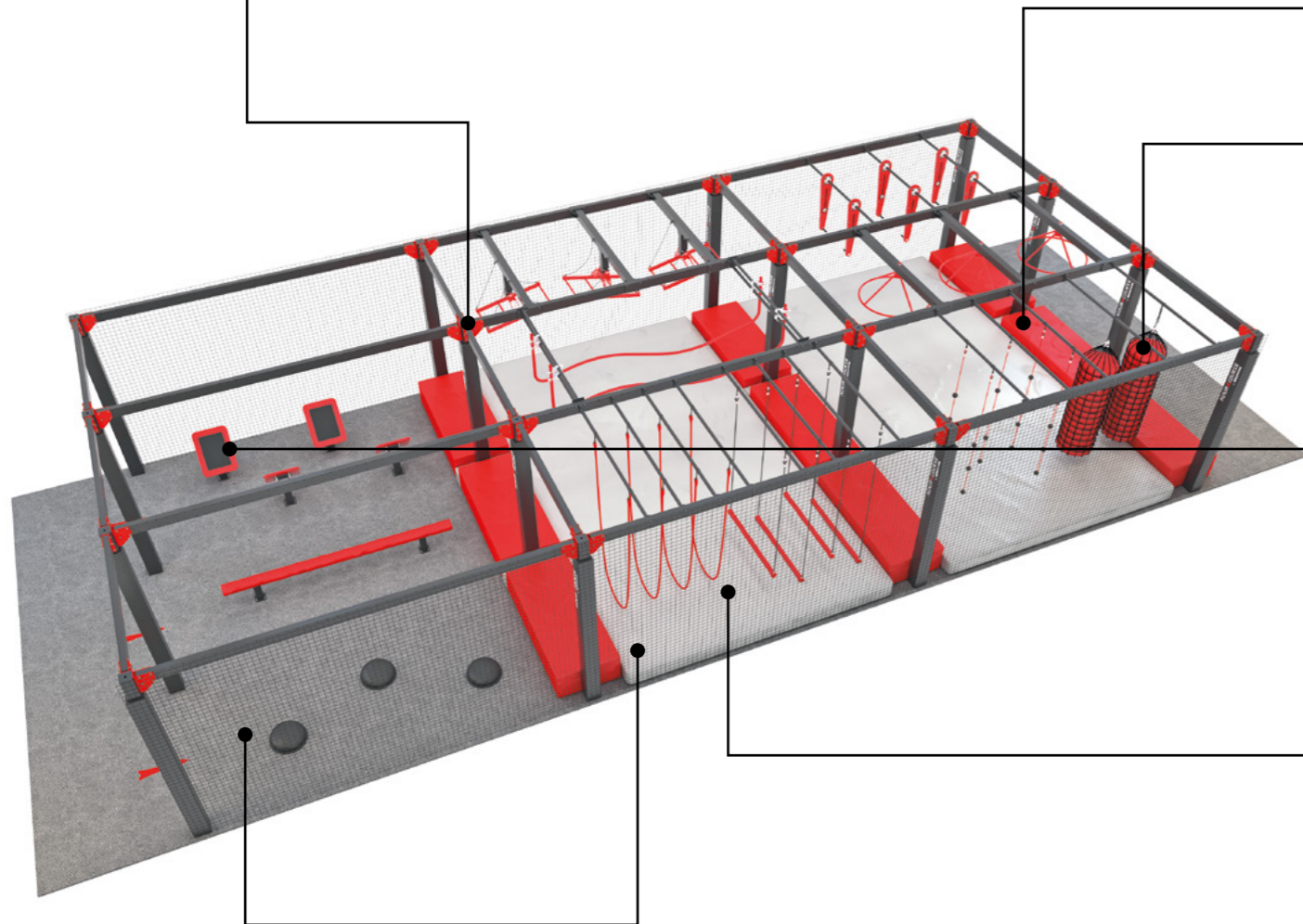
Ground obstacles

Multiple ground-based obstacles are also available. They require little to no support structure and so most can also be re-arranged.



Safety nets

Located either at the edges of the Ninja Course or in-between lanes, safety nets increase safety by preventing falls outside of the attraction or collision with other participants.



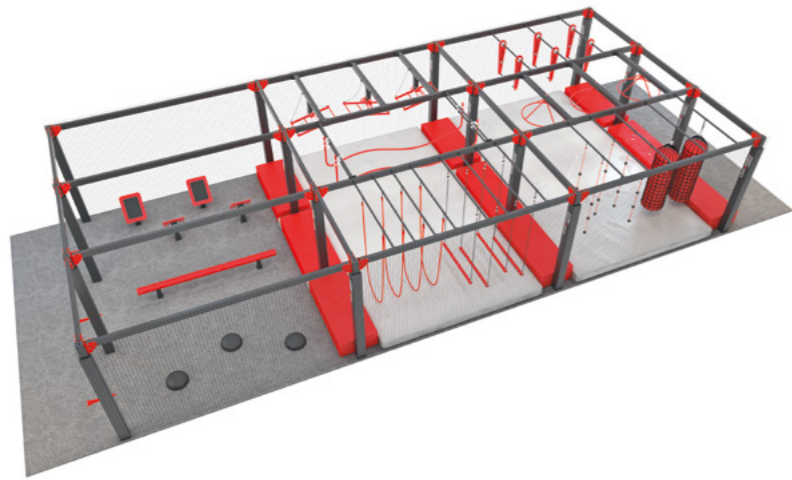
Flooring

Multiple flooring options are available for the Ninja Course. The most common go-to solutions, as shown here, are carpet bonded foam and foam mat. Inflatable air bags and foam pits are also available.

Details of the model shown

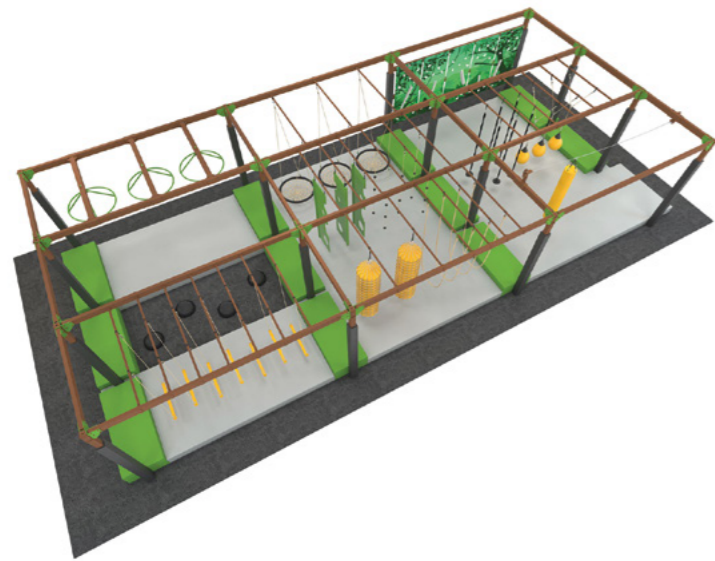
| | |
|----------------------|--|
| Configuration | 3 parallel lanes with 9 obstacles |
| Flooring | Foam-padded mat 20 cm (7.9 in) + Carpet bonded foam 3.5 cm (1.35 in) |
| Dimensions | 7.9 x 20.9 m (25.8 x 68.4 ft) |
| Footprint | 164 m ² (1765 ft ²) |
| Capacity | Up to 90 ppl/h |
| Staff | 1 staff member required |

MODELS



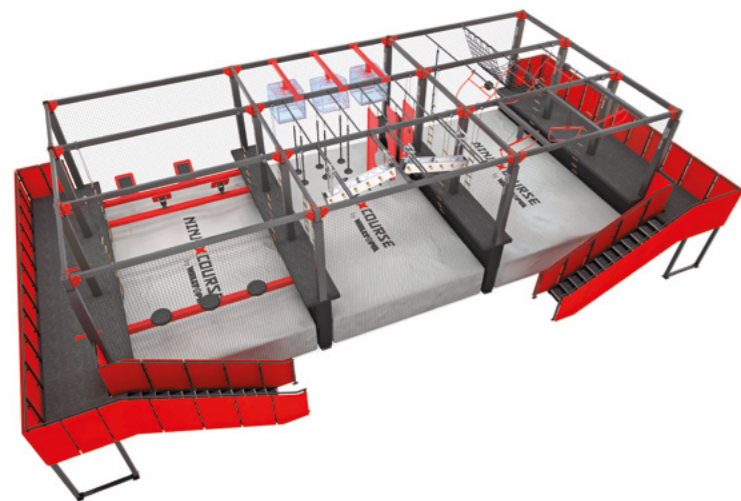
Ground-based

- Hanging & floor obstacles
- Modular structure, available in steel or aluminium
- Single module size: 13.75 m² (148 ft²)
- Multiple color options



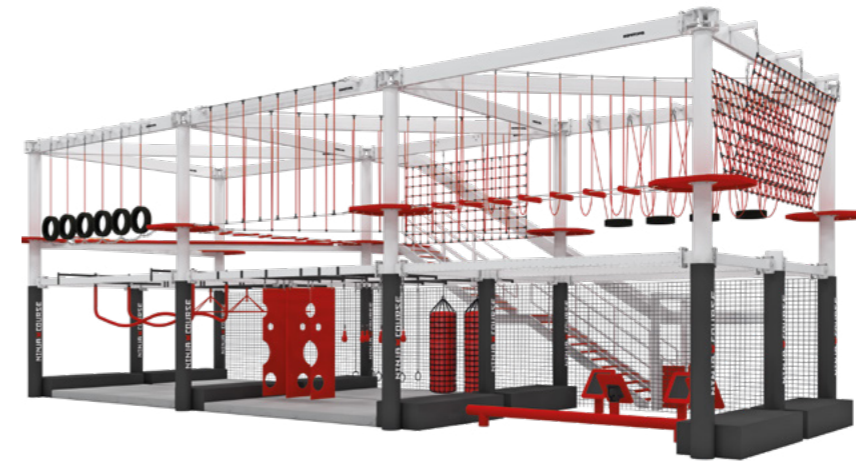
Kid's ground-based

- Lowered obstacles adapted to kids' size
- Hanging & floor obstacles
- Modular structure, available in steel or aluminium
- Single module size: 13.75 m² (148 ft²)
- Multiple color options
- Multiple pre-designed themes



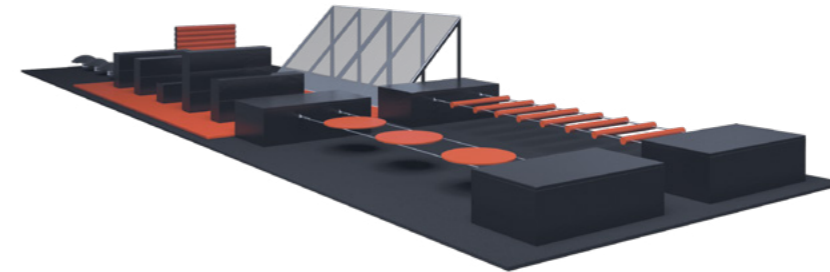
Elevated

- Exciting course raised by 2.1m (7ft) and equipped with inflatable airbags
- Hanging & floor obstacles
- Modular structure, available in steel or aluminium
- Single module size: 13.75 m² (148 ft²)
- Multiple color options



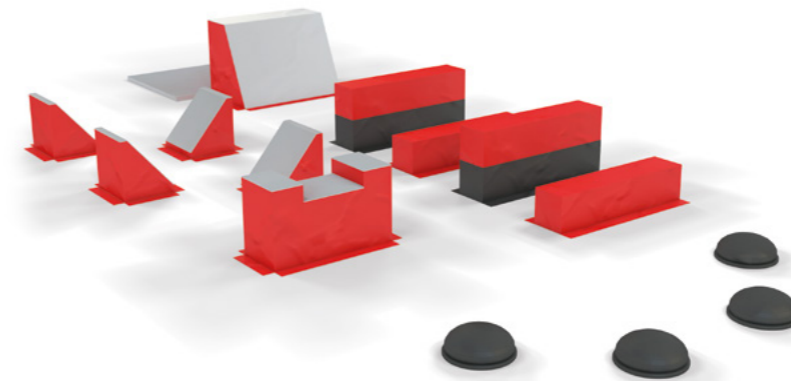
Multi-level

- Ground-based course on the 1st level & ropes course on 2nd level
- Hanging, floor & ropes obstacles
- Modular structure, available in steel or aluminium
- Single module size: 13.75 m² (148 ft²)
- Multiple color options



Parkour

- For low ceilings and limited spaces
- Doesn't require any supporting structure
- Multiple color options



Kid's parkour

- Adapted for participants under 12 years old
- For low ceilings and limited spaces
- Doesn't require any supporting or anchoring structure
- Multiple color options

MODELS



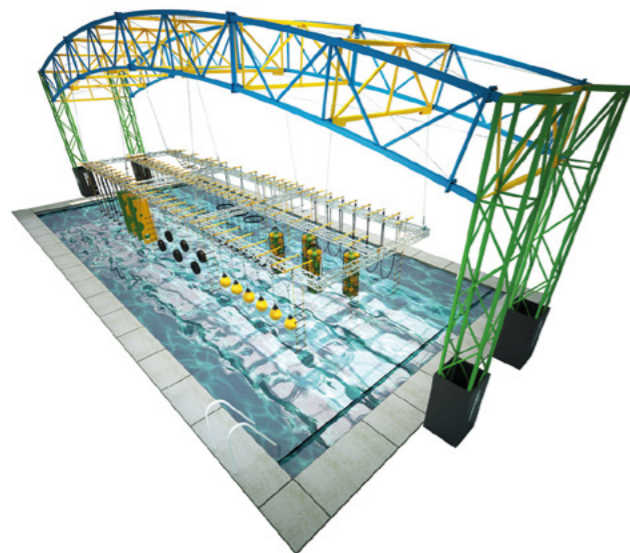
Hop-on

- Free-roaming experience
- No platforms resulting in a higher capacity
- Easily retrofitted to trampoline parks
- Modular structure, available in steel or aluminium
- Single module size: 13.75 m² (148 ft²)
- Multiple color options



Vertical ninja

- 4 lanes, 4 participants, 4 challenges to test yourself
- Available challenges: upstream ladder, invisible ladder, plexi board, rope climb
- Available in 6, 7 & 8 m heights (19.6, 23 & 26.2 ft)
- Size: 92 m² (990 ft²)



Water ninja*

- Structure retrofittable to indoor & outdoor pools
- Large variety of water resistant obstacles
- A super-refreshing experience
- Multiple color options

* Product still under development, susceptible to change

OBSTACLES

Run the curve



Arc beam



Cheese walls (x3)



Climbing bags (x3)



Jumping monkeys (x3)



Jumbo dice (x3)



Hanging Rings (x4)



Inclined steps



OBSTACLES

Springed bars (x3)



Poles with balls



Sky bridge



Slider



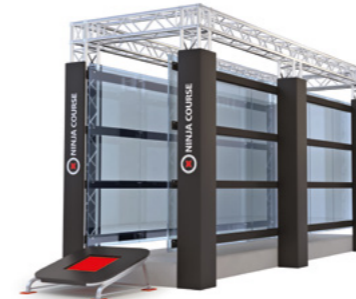
Ring slider



Rope swings (x9)



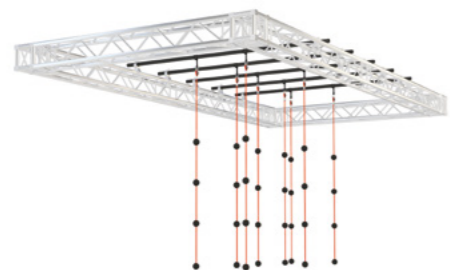
Ninja wall



Spin cycle (x3)



Rope with balls (x4)



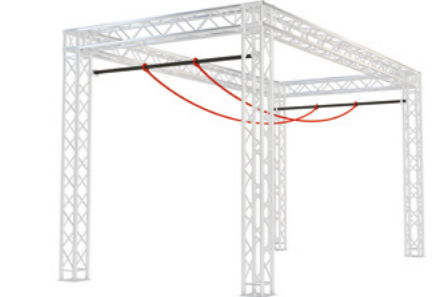
Rotating wheel



Jungle bars (x5)



Jungle ropes



Upstream ladder



Sea of swings (x9)



Tilting frame (x3)



Tube net



FLOORING SOLUTIONS



Inflatable airbag

- Available for elevated courses
- Height: 1.2 to 1.5 m (3.9 to 4.9 ft)
- Option for HD printing on the airbag



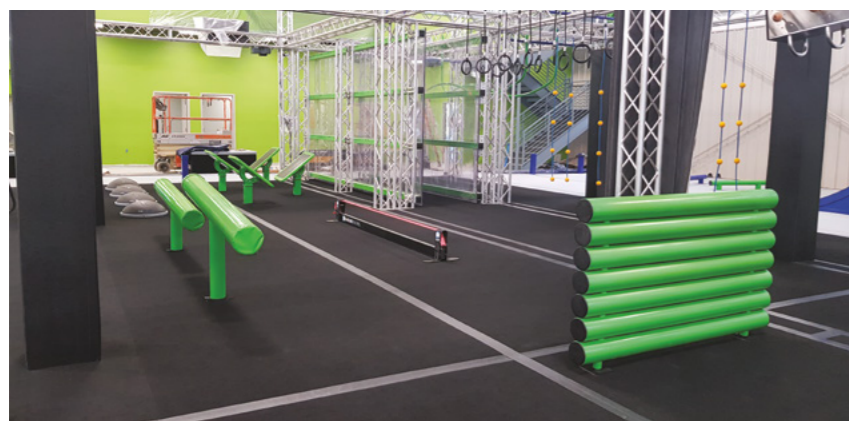
Foam mat

- Available for ground-based courses
- Height: 20 cm (7.9 in)
- Easy to clean and maintain
- Multiple color options



Foam Pit

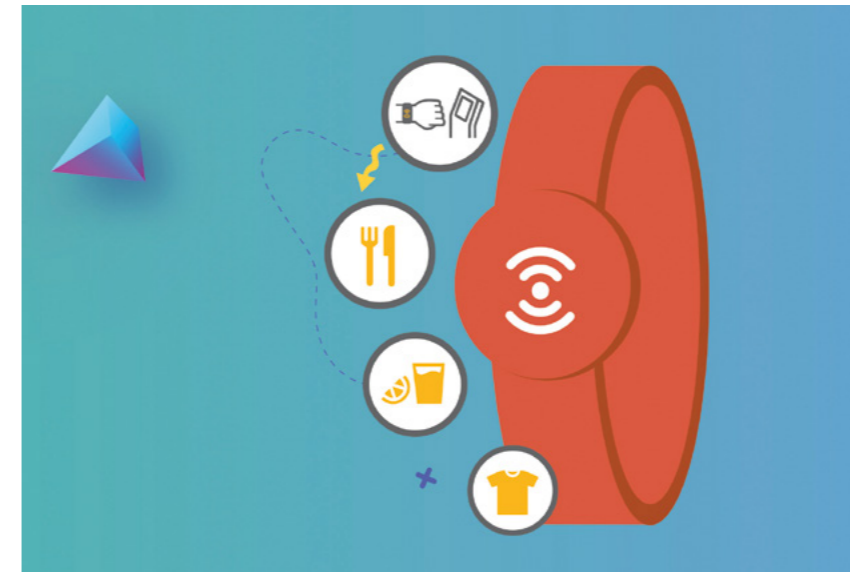
- Low initial cost
- Emblematic feature
- Strong visual impact



Carpet bonded foam

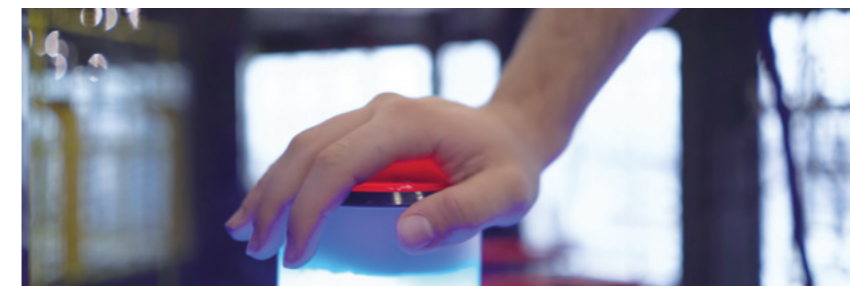
- Available for ground-based courses
- Height: 3.5 cm (1.35 in)
- Multiple color options

ADD-ONS & CUSTOMIZATION



GAMIFIER

- Gamify the experience through an interactive platform & RFID bracelet.
- Visitors collect points and compete to get rewards.
- Compiles and analyzes data that empowers operators.
- Customizable and retrofittable to your facility.



Racing lines

- Turn the experience into a competition.
- Time & rank visitors' speed.
- A great incentive for group visits and increased repeatability.
- Contains a starting sensor, stop button and a TV screen that displays the leaderboard
- Optional smoke machine and sound system



Colors

The course's obstacles, column padding and airbags are available in any desired color of the RAL classic palette and can also be branded with a logo or a personalized message.



REFERENCE PROJECTS



PLAY: CBUS
Columbus, Ohio, USA

Facility Family entmt. center

Models Ground-based, vertical, elevated

Obstacles 36

Completed 2020

Additional Products Ropes Course
Fun Walls
Zipline
Boulders
Via ferrata



HOMETEAMNS
Singapore

Facility Family entmt. center

Model Ground-based

Obstacles 9

Completed 2020

Additional Products Cloud Climb
Adventure Trail
Walltopia Caves
Rollglider
Ropes Course
Fun Walls



POSITIVE JUMP & CHALLENGE
Pau, France

Facility Trampoline park

Model Ground-based

Obstacles 18

Completed 2020

Additional Products Fun Walls



ADVENTURES ZONE
Riga, Latvia

Facility Family entmt. center

Model Ground-based

Obstacles 7

Completed 2020

Additional Products Fun Walls



SPORTS CLUB VALLENTUNA
Vallemtuna, Sweden

Facility Sport center

Model Ground-based

Obstacles 74

Completed 2020



FREEDOG BRISTOL
Bristol, United Kingdom

Facility Trampoline park

Model Elevated

Obstacles 10

Completed 2019

WALLTOPIA



OVER 1800 PROJECTS

IN 78 COUNTRIES ON 6 CONTINENTS

Founded in Bulgaria in 1998, Walltopia is a world leader in the Climbing and Adventure & Leisure industries. The company started out with the purpose of designing and manufacturing the most advanced climbing facilities in the world.

Our passion for science, technology and our obsession with excellence and safety, made us a leader and top expert in the Climbing and Active Entertainment industries.

We pride ourselves with our highly complex projects that always deliver expected results – starting with the design, moving on to the installation and finally – the certification.

Today we have the largest portfolio of classic and novel attractions that combine fun and entertainment with healthy doses of adrenaline for people of all ages. With sales offices in the USA, Canada, China, UAE, Asia Pacific, a Head office in Sofia, Bulgaria and four production plants employing more than 600 people, to this day, we have produced over 1800 projects in 78 countries and on 6 continents.

Our products are installed across adventure parks, amusement parks, shopping malls, gyms, recreational areas, ski resorts, schools & universities, hotels and more.

LET'S TALK ABOUT YOUR PROJECT

Contact us at adventure@walltopia.com
or visit www.adventure.walltopia.com